



FMT3067

Air Operated Spraygun Cleaner

Product Instruction Manual

Please keep this manual safe for future reference



**FAST
MOVER**
Automotive Refinishing



fastmovertoolsuk.com/mp

T: +44 (0)1582 661993 E: sales@fastmovertoolsuk.com W: www.fastmovertoolsuk.com

IMPORTANT



Please read through this Manual carefully before using the FMT3067.

This tool must only be used for spraygun cleaning and within the parameters outlined in this manual. All users of the equipment should be trained in any risks associated with the products they are cleaning or using as cleaning aids.

There is a risk of explosion if proper safety precautions are not followed when using this tool to clean solvent.



Tool Use

This air operated spraygun clean can be used for the cleaning the following sprayguns;

- Gravity
- Suction
- Pressure Feed up to 2ltrs (lid, gun and hoses)

Specification

Operating Pressure	40-60PSI
Air Consumption	2-4CFM
Capacity	2 Pots and 2 Guns
Dimensions	W: 470mm D: 650mm H: 1000mm
Reservoir Capacity	20ltrs
Pump	Pneumatic Diaphragm Pump
Weight	33.5kg
Noise Level	75dB
Inner Tank Material	Polyethylene

Important

Although this machine is designed for both solvent and waterbased use, you must ensure that this machine is thoroughly flushed through before the changeover to remove any trace of the material. This is to prevent contamination issues

General Safety Instructions

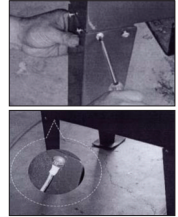
- 1 **WARNING!** Ensure that HSE, local authority and our own Health and Safety policy is adhered to at all times when using this equipment.
- 2 **WARNING!** The installation site must be equipped with foam fire extinguishers. Water must not be used.
- 3 **ALWAYS** disconnect the equipment from air source before changing accessories, cleaning, servicing or carrying out maintenance.
- 4 **ALWAYS** keep tank in good condition (use an authorized service agent).
- 5 Replace or repair damaged parts using genuine parts only. Non-authorized parts may be dangerous and will invalidate warranty (use an authorized service agent).
- 6 Position the tank in a suitable location. Ensure that it is placed on a stable and level surface.
- 7 **ALWAYS** keep the work area clean and tidy and free from unrelated material.
- 8 Ensure that the location of this equipment is well ventilated and has sufficient lighting.
- 9 **WARNING!** Ensure that the correct air pressure is maintained and not exceeded. The

- recommended pressure is 40-60PSI(2.75-4.1BAR).
- 10 Keep air hose away from heat, oil and sharp edges.
- 11 ALWAYS check air hose for damage before use and that all air connections are clean, secure and undamaged.
- 12 WARNING! Do not use water and solvent cleaners at the same time. The tank must be flushed fully before changeover.
- 13 ALWAYS read the Material Safety Data Sheets (MSDS) for any fluid that you choose to clean with. ALWAYS consult paint MSDS to ensure that it is compatible with the cleaner you are using.
- 14 ALWAYS keep the tank clean. Regularly clean (or replace if necessary) the suction filter for best performance.
- 15 WARNING! Do not smoke or keep potential sources of ignition near this machine at any time, together with flammable or combustible materials as there is a risk of explosion.
- 16 WARNING! Wear approved eye protection, respirator and gloves. If solvent gets onto your skin or into your eyes, rinse thoroughly with clean water and take any other action required or stated on the solvent instructions or MSDS. Seek medical attention if in any doubt.
- 17 DO NOT wear loose or ill fitting clothing, ties, watches, rings or other loose jewellery when using this machine.
- 18 ALWAYS tie long hair back.
- 19 ALWAYS where the appropriate PPE clothing and equipment.
- 20 Maintain correct balance and footing. Always where non-slip footwear.
- 21 Make sure that the floor is not slippery or wet.
- 22 Keep all non-essential persons away from this machine and the working area.
- 23 In the case of a fire inside the machine, do not attempt to move it whilst it is still operating.
- 24 DO NOT use the machine with lid open. This machine is fitted with a safety switch which stops the operation if the lid is opened. This switch should not be tampered with or removed. Doing so will invalidate the warranty.
- 25 DO NOT use this equipment for spray gun testing.
- 26 DO NOT use this equipment if parts are missing or damaged. Doing so could cause serious damage to the machine and could also cause injury to users. Using the machine in a faulty condition will invalidate the warranty.
- 27 DO NOT over-fill the tank (19ltrs max.).
- 28 DO NOT direct air from the hose or at others.
- 29 DO NOT use this equipment if you are tired or under the influence of drugs, alcohol or intoxicating medication.
- 30 When the cleaning operation is completed, turn all controls off and make sure that the air connection is removed or switched off.
- 31 WARNING! It is the operator's responsibility to ensure that there is no uncontrolled discharge (whether in error or on purpose) of any fluids used in this machine. It is the operator's responsibility to ensure that a proper system is in place for the safe disposal of waste fluid in accordance with government/local authority regulation.
- 32 WARNING! The operator must be fully acquainted with the contents of this manual and be instructed with the use and operation of this equipment. It is the owner's responsibility to provide suitable training if this is required.
- 33 WARNING! DO NOT run the machine without the screen platform inside the tank. This may cause the solvent to spill out of the tank.
- 34 DO NOT open the lid as soon as the cleaning operation has finished. You must wait at least 30 seconds to allow the solvent to condense to avoid inhalation of vapour.
- 35 WARNING! Breathing in solvent vapour will seriously damage your health.
- 36 Women should not operate this equipment whilst pregnant.

- 37 **WARNING!** Before opening the lid of the tank to insert spraygun, earth the metal body of the gun to the bare metal contact on the machine to discharge any static electricity. Not doing this could cause a fire.
- 38 In the case of a malfunction with the safety switch, turn off the air supply at the air inlet.

Assembly Instructions

- 1 Attach legs to cabinet with screws (60), washers (61) and nuts (62) provided and fit drain valve (63) to base of tank (2).
- 2 To prevent possible static build up, run a wire earth from the frame to earth. **Before operating the machine, the user must check this wire.**



Air Supply

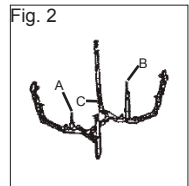
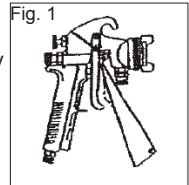
- 1 Ensure that the air valve (64) is closed before connecting the air supply.
- 2 An air pressure of 40-60PSI and an available air volume of 0.06-0.11m³/min is required to run this machine.
WARNING! Ensure air supply is clean and does not exceed 60PSI. Too high an air pressure and/or unclean air will shorten the machine's life due to excessive wear and may be dangerous, causing possible damage and personal injury. The air supply must be equipped with a Regulator/Filter/Lubricator.
- 3 Line pressure should be increased to compensate for unusually long air hoses (over 8 metres). The minimum air hose diameter should be 10mm ID and fittings should have the same internal diameter.
- 4 Keep air hose away from heat, oil and sharp edges.
- 5 ALWAYS check air hose for damage before use and that all air connections are clean, secure and undamaged.
- 6 The air inlet is 1/4" NPT.

Operating Instructions

WARNING! Ensure that you have read and understood the safety instructions. Wear approved safety gloves, respirator and suitable clothing.
WARNING! Before using the machine, always touch a suitable earthing point to dissipate any electrostatic charge that you may have.

- 1-1 *Preparing the Tank and Items for Cleaning*
- 1-1 Before opening the lid of the tank to insert spraygun, earth the metal body of the gun to the bare metal contact on the machine to discharge any static electricity. Not doing this could cause a fire.
- 1-2 Ensure tank drain ball valve (63) is closed then pour solvent into the tank (2). To aid future sludge removal approximately 2ltrs of water may be added before or after the solvent. Ensure that the final level is at least 25mm (1") above the pump suction strainer (59).
- 1-3 Confirm that the air valve (20) is closed and that the air supply is regulated to no more than 60PSI. Turn on the air supply.
- 1-4 Partially open the air valve (20) and allow pump to run slowly for approx. 2 minutes to remove any fluids used during the manufacturer's tests.
- 1-5 Check the spraygun to be cleaned. Empty and store and unused paint for future use. For best results clean immediately after use, having removed as much residual paint as possible.
- 1-6 Fit the trigger lock (56) as shown in *Fig. 1* and *Fig. 3*.
- 1-7 Two gun supports are provided, one short (*Fig. 2, A*), one long (*Fig. 2, B*). Use whichever one suits the configuration of the gun. Typically, gravity guns fit the low

- 1-7 cont. support, ensuring that it doesn't foul the lid. Suction guns are to be fitted to the long support. If required, the gun cleaning nozzle (8) may be fitted directly to the manifold (6) without items 9 and 10, thus providing two short nozzles.
- 1-8 For pressure fed guns up to 2ltrs capacity place the siphon stem of the pot cover over the short support and position the gun and hoses on the screen platform. Over this capacity, disconnect the gun from the lines and place on the long support.
- 1-9 Place pots over nozzles (Fig. 2, C).
- 2 *Cleaning Operation*
- 2-1 Ensure washer lid is closed and then fully open pump air valve (20). The pump will now operate and send an atomized spray through the nozzles in the cleaning tank.
- 2-2 Cleaning will be complete after 60 seconds, at which time the pump should be turned off by closing air valve (20).
- 2-3 Open lid and remove cleaned equipment.



NOTE: If during cleaning, the lid is opened, the cleaning process will be stopped automatically. Close the lid to resume cleaning. DO NOT store guns in the tank.

Solvent Change and Maintenance

WARNING! It is the operator's responsibility to ensure that there is no uncontrolled discharge (whether in error or on purpose) of any fluids used in this machine. It is the operator's responsibility to ensure that a proper system is in place for the safe disposal of waste fluid in accordance with government/local authority regulation.

WARNING! disconnect the equipment from air source before changing accessories, cleaning, servicing or carrying out maintenance.

WARNING! Wear approved safety gloves, respirator and suitable clothing.

1 *Solvent replacement*

1 The number of guns the solvent will clean will depend on the amount of residual paint left in the equipment. We recommend, however, that solvent is changed on a regular basis to provide optimum cleaning performance and that paint sludge is removed weekly as detailed below.

- 1-1 **Sludge Removal - No water added.** Drain 2ltrs of solvent/sludge via the drain valve (63). Close valve and add solvent to the tank to bring the level to at least 25mm above the strainer.
- 1-2 **Sludge Removal - Water added.** Drain water until it becomes discoloured, close drain valve. Change receptacles and re-open valve and drain 2ltrs of solvent/sludge. Close valve and replace water in the tank. Add clean solvent to the tank to bring the level to at least 25mm above the strainer.
- 2-1 **Solvent change.** Completely drain dirty solvent as in 1-1. Clean the inside of the tank and strainer before refilling. Clean any spillages immediately.

2 *Maintenance*

- 2-1 Regularly check that opening the washer lid automatically stops the spray. **DO NOT USE IF A FAULT IS FOUND.**
- 2-2 Check and add air tool oil to the air cock (67) on a monthly basis.
- 2-3 Keep the outside of the unit clean.
- 2-4 Inject lubricant into air inlet every 3 months.
- 2-5 Use a hexagonal screwdriver in tool bag to open the circular cap of the pump and inject lubricant into it. *Fig. 4.*



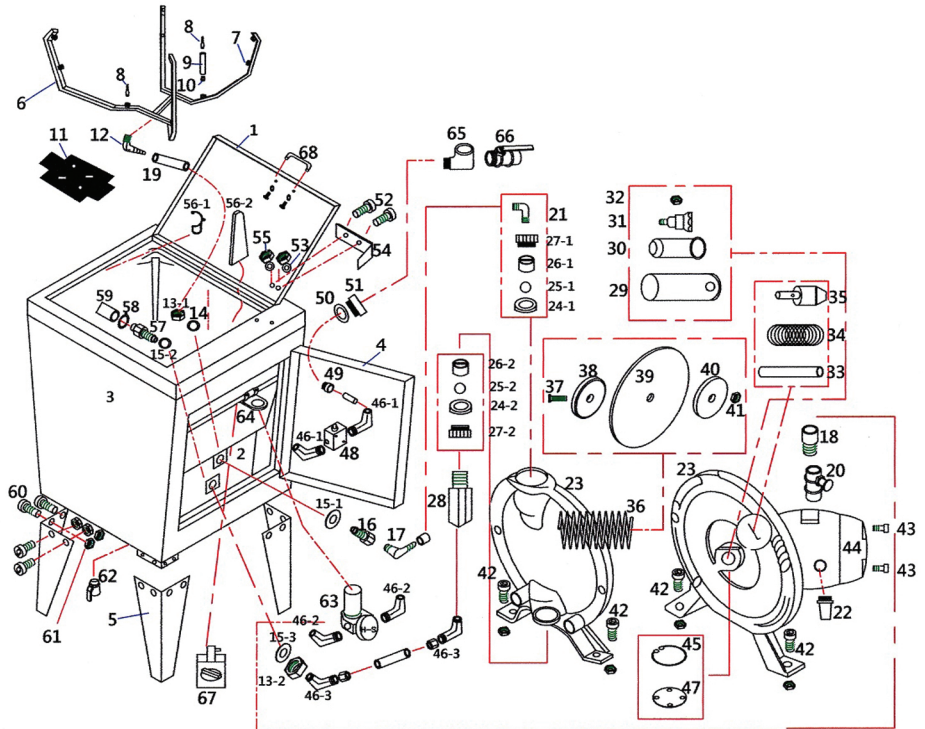
Fast Mover Tools Limited

T: 01582 661993 F: 01582 667100 E: sales@fastmovertoolsuk.com

www.fastmovertoolsuk.com

Parts Diagram

FMT3067 Two Gun Spraygun Cleaner



Ref.	Code	Description	Ref.	Code	Description	Ref.	Code	Description
1	FMT3067/1	Lid Cover	25	FMT3067/25	Ball	49	FMT3067/49	Connector
2	FMT3067/2	Tank	26	FMT3067/26	Ball Stopper	50	FMT3067/50	Connector
3	FMT3067/3	Frame	27	FMT3067/27	Hex Nut	51	FMT3067/51	Hex Nut
4	FMT3067/4	Door	28	FMT3067/28	Connector	52	FMT3067/52	Screw
5	FMT3067/5	Leg	29	FMT3067/29	Valve Holder	53	FMT3067/53	Washer
6	FMT3067/6	Pipe	30	FMT3067/30	Valve Cover	54	FMT3067/54	Switch Plate
7	FMT3067/7	Nozzle	31	FMT3067/31	Valve Piston	55	FMT3067/55	Hex Nut
8	FMT3067/8	Long Nozzle	32	FMT3067/32	Screw	56	FMT3067/56	Chain & Plastic Trigger Lock
9	FMT3067/9	Extension Bar	33	FMT3067/33	Fixing Bolt	57	FMT3067/57	Connector
10	FMT3067/10	Extension Bar	34	FMT3067/34	Spring	58	FMT3067/58	Hose Clamp
11	FMT3067/11	Screen Platform	35	FMT3067/35	Cool Down Valve	59	FMT3067/59	Strainer
12	FMT3067/12	Angle Connector	36	FMT3067/36	Spring	60	FMT3067/60	Screw
13	FMT3067/13	Hex Nut	37	FMT3067/37	Washer	61	FMT3067/61	Washer
14	FMT3067/14	Washer	38	FMT3067/38	Washer	62	FMT3067/62	Hex Nut
15	FMT3067/15	Washer	39	FMT3067/39	Diaphragm	63	FMT3067/63	Ball Valve
16	FMT3067/16	Connector	40	FMT3067/40	Washer	64	FMT3067/64	Pressure Valve
17	FMT3067/17	Angle Connector	41	FMT3067/41	Hex Nut	65	FMT3067/65	Pressure Holder
18	FMT3067/18	Connector	42	FMT3067/42	Screw	66	FMT3067/66	Connector
19	FMT3067/19	Angle Connector	43	FMT3067/43	Screw	67	FMT3067/67	Cock
20	FMT3067/20	Regulator	44	FMT3067/44	Air Cap			
21	FMT3067/21	Angle Connector	45	FMT3067/45	Retaining Ring			
22	FMT3067/22	Blaster	46	FMT3067/46	Angle Connector			
23	FMT3067/23	Cylinder	47	FMT3067/47	Washer			
24	FMT3067/24	Washer	48	FMT3067/48	Auto Stop Switch			

Warranty

We hope that you will be very happy with your purchase. If you do have a problem with your tool, you have the added peace of mind of a 12 month warranty, which comes into date from the date of purchase (proof of purchase required).

Scope of Warranty

- The warranty will cover you from all faults caused by defective components or poor workmanship.
- Tools sent outside the EU are not covered by this warranty.
- Product must be returned to us, the warranty does not cover cost of carriage.
- If the product is no longer in manufacture, it will be replaced with a tool of equivalent or higher specification.

What is not covered

- Normal wear and tear caused by use in accordance with the operating instructions.
- Replacement of any provided accessories, such as Airline Connections, Air Fittings, Blades, Spanners, etc.
- Accidental damage, faults caused by negligent use or care, neglect, misuse or careless operation, handling and storage of the product.
- Modification of, or change of, any part of this product in any way.
- Faults caused by use of non compatible accessories.
- Tool seizure caused by insufficient oiling.
- Faults caused by incorrect installation.
- Repairs or alterations carried out by non-approved parties.
- Traces of water or rust inside tool - this shows that a properly working air filter has not been used.

Validity

- This warranty is valid for 12 months after date of purchase.
- Warranty is rendered invalid if;
 - Tool is taken apart for any reason without our consent.
 - Tool is not oiled as per instructions in this manual.
 - Air supply line is not used with a properly working air filter.
- A warranty claim will not be accepted without an official proof of purchase from your supplier.

Warranty Verification

Please keep this manual with your tool for the purpose of verifying your warranty. Fill in box below to validate warranty.

Fax to 01582 667100

Year of Manufacture: 2014 **Tool Code:** FMT3067

Your Details

Place of Purchase

Company _____

Address _____

Post Code _____

Post Code _____

Date _____

Email _____

Fast Mover Tools Limited

T: 01582 661993 F: 01582 667100 E: sales@fastmovertoolsuk.com

www.fastmovertoolsuk.com

Declaration of Conformity

We declare that the equipment detail below, to the best of our knowledge and ability, complies with the following Directive.

Machinery Directive - 2006/42/EC
ATEX Directive - 94/9/EC



Equipment Description	Air Operated Spraygun Cleaner (Two Gun)
Part Code	FMT3067
Distributed in the EU by Address	Fast Mover Tools Limited Unit 1 Frenchs Avenue Dunstable Bedfordshire LU6 1BH United Kingdom

The following Transposed Harmonised Standards have been applied in the design and construction of this equipment:

- | | |
|-----------------|---|
| EN 1127-1 | Explosive atmospheres. Explosion prevention and protection. Basic concepts and methodology |
| EN 13463-1:2001 | Non-electrical equipment for potentially explosive atmospheres. Basic method and requirements |
| EN 13463-5:2003 | Non-electrical equipment intended for use in potentially explosive atmospheres. Protection by constructional safety 'c' |
| EN 292-1 | Safety of machinery. Basic concepts, general principles for design. Basic terminology, methodology |
| EN 292-2 | Safety of machinery. Basic concepts, general principles for design. Technical principles and specifications |
| EN 983 | Safety of machinery. Safety requirements for fluid power systems and their components. Pneumatics |
| EN 1050 | Safety of machinery. Principles for risk assessment |

The manufacturer and the distributor, stated above, hold the Technical Construction File for this equipment.

Signed on behalf of the distributor
(the responsible person)


.....

Name: Brian Moffitt
Position: Director
Date and Place: 20/01/2014, Dunstable, UK



Please look after the environment, dispose of all packaging in a responsible way. Always dispose of tools in accordance with local authority guidelines. Ensure that waste paint and cleaning fluids are disposed of in accordance with government legislation.