

# FMT300

## Pair of Wheel Skates



### Model Overview

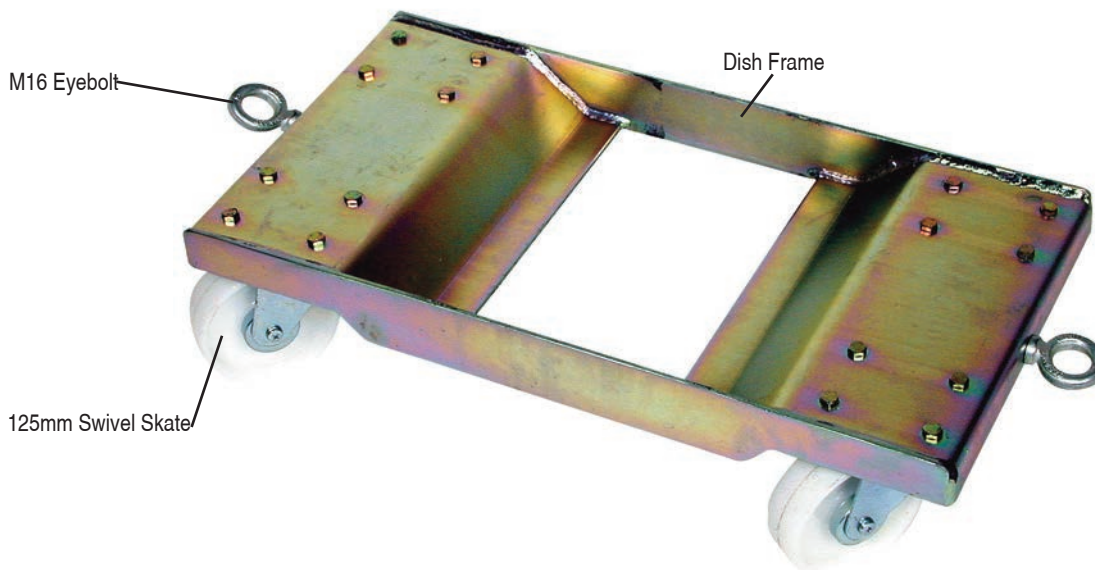
#### Specifications

Dimensions:	670L x 340W
Max Type Width:	300mm
Weight Capacity:	1800kg per Pair
Weight:	13.75kg per Unit

#### General Safety Information

- 1 Do not use if any part is damaged or broken.
- 2 Always ensure that all vehicle is securely attached to the skates using the correct equipment before pulling or pushing by any mechanical or manual means.
- 3 Do not operate if under the influence of drugs, alcohol or any other intoxicating medicine or substance.
- 4 Always operate on a smooth, level surface. Damage may occur to the skate or it's load if used on and uneven or broken surface.
- 5 Always be aware of other persons or obstacles or persons in your path or otherwise working in the area and understand the operators actions can have a direct or indirect effect on other persons.
- 6 Take care to use the correct jacking points for the particular vehicle when preparing to use these skates.
- 7 Not for use by children.
- 8 Overloading these skates or using them for any other purpose than that intended could lead to skate failure, potentially leading to property damage or even serious personal injury and crushing.
- 9 This skate is not for towing.

#### FMT300 at a Glance



Fast Mover Tools Limited  
 Unit 1 Frenchs Avenue  
 Dunstable  
 LU6 1BH  
 T: 0044 (0)1582 661993  
 E: sales@fastmovertoolsuk.com  
 W: www.fastmovertoolsuk.com

# FMT300

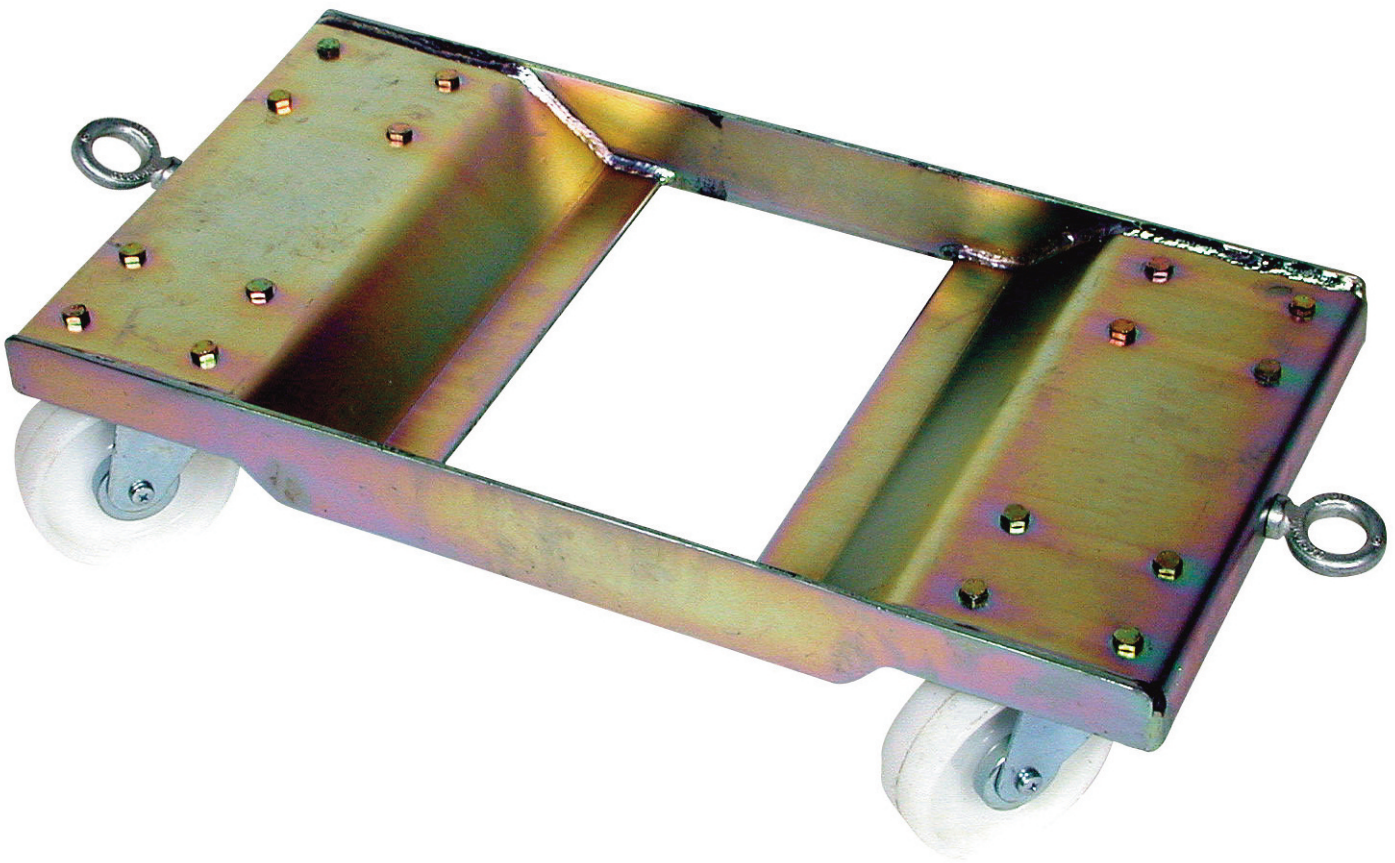
## Pair of Wheel Skates

**FAST  
MOVER**  
Automotive Refinishing

### Parts List

#### Packing List

2	FMT300/1	FMT300 Wheel Skate
4	FMT300/2	Frame M16 Dynamo Eye
4	M12 N	Bolt
32	M8 x 20	M16 Nyloc
32	M8N	M8 x 20mm Set Screw
32	M8W	M8 Nyloc
8	FMT310	M8 Washer
		125mm Nylon Swivel Caster



Fast Mover Tools Limited  
Unit 1 Frenchs Avenue  
Dunstable  
LU6 1BH  
T: 0044 (0)1582 661993  
E: sales@fastmovertoolsuk.com  
W: www.fastmovertoolsuk.com