

SATA® adam 2™, SATA® adam 2 U™



Spray Guns | Cup Systems | Breathing Protection | Air Filtration | [Accessories](#)



Flexibly Digitized!



SATA adam 2 – keeping the pressure under control

The accurate and correct setting of the gun inlet pressure is one of the key requirements to ensure perfect color match during the painting process. Whether the pressure is set too low or too high, color deviations will be the undesired result. The consequences are unnecessary rework disrupting the efficient work flow. "Incorrect inlet pressure" can be prevented by using SATA digital spray guns or the accessories SATA adam 2 and SATA adam 2 U.

SATA adam 2

The SATA adam 2 is the compact retrofit solution for SATA spray guns: It consists of two components: The **SATA adam 2 dock** replaces the air micrometer of the spray gun and allows the quick and precise setting of the inlet pressure (+/- 0.7 psi). The respective high-precision measuring electronics is integrated in the **SATA adam 2 display**. It can be safely fitted to the "dock" and can be removed in no time at all – for example before cleaning the spray gun in a gun washing machine or to use the "display" on another spray gun with pre-mounted "dock".

The "docks" are separately available allowing to retrofit all your SATA spray guns. The big advantage: With one SATA adam 2 display only, your entire spray gun inventory can be cost-efficiently "digitalized". By the way: The "display" can be easily cleaned with a cloth soaked in cleaning agent.

SATA adam 2
(SATAjet X 5500,
5000 B and
SATAjet 5000 PHASER only)
Part No. 211557 chrome

SATA adam 2 black
Order No. 1031715

SATA adam 2
for SATA spray guns
except 5000 series &
SATAmijet
Part No. 160853 chrome

SATA adam 2 black
Part No. 1031690



SATA adam 2 U (= Universal)

With the SATA adam 2 U, all other types of guns can be also digitized: The SATA dry jet blow gun as well as all spray guns of other makes. The adjustment screw on the side of the SATA adam 2 dock allows to set the pressure precisely.

SATA dock

This retrofit unit offers even further options for digital pressure control: Combined with the SATA adam 2 display, it replaces any analog pressure gauge with G 1/8 male thread, e.g. on pneumatically operated systems or when upgrading an existing SATA air micrometer with analog pressure gauge #27771 as well as SATA filters to digital.



SATA adam 2 mini
for SATAmijet 3, 4,
3000 B & 4400 B
SATAmijet 1000 K & H
Part No. 160887 chrome

SATA adam 2 mini black
Part No. 1031674

SATA adam 2 U
Air micrometer G 1/4 with SATA
adam 2 display for SATA dry jet
and competitor spray guns
Part No. 195222 chrome

SATA adam 2 U black
Part No. 1031731





The SATA adam 2 displays the spray gun inlet pressure with an accuracy of +/- 0.7 psi.

PRODUCT BENEFITS

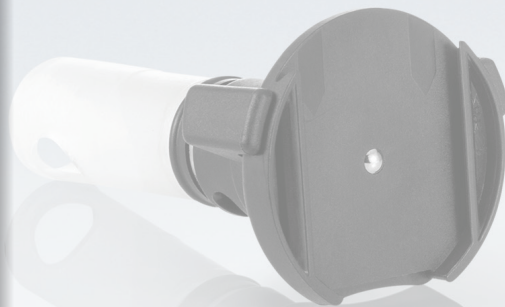
- To retrofit – Converts any non-digital spray gun to a "DIGITAL"
- Precise setting and display of the inlet pressure – ensures perfect color match
- Display can be attached and removed in no time at all
- Display can be used on several spray guns– thus, your entire spray gun inventory can be "digitized" cost-efficiently
- Extended battery lifetime, the battery can be replaced by the end-user

Technical Data

Approval for use in explosive areas	II 2G Ex ia IIC T4 (KEMA 05ATEX1090X)	
Display accuracy	+/- 0.7 psi	
Max. operating pressure	150.0 psi	
Max. operating temperature	60° C / 140° F	
Weight	SATA adam 2 (mini)	45 g / 1.6 oz.
	SATA adam 2 U	100 g / 3.5 oz.
	SATA adam 2 U dock	70 g / 2.5 oz.



SATA adam 2 U – Allows to digitize SATA dry jet blow guns and competitor spray guns.












SATA dock
with G 1/8 male thread to upgrade analog gauge, e.g. on pneumatically operated systems Part No. 195925



Upgrading an analog pressure gauge with a SATA adam 2 display with the help of a SATA dock (requires adapter from G 1/4 male thread to G 1/8 female thread, Part No. 677023)

For more information on SATA pressure measuring devices, please contact your SATA dealer or visit www.satausa.com

	SATAjet X 5500	SATAjet X 5500 PHASER	SATAjet 5000	SATAjet 5000 PHASER	SATAjet 4000	SATAjet 3000	SATAjet 1500 SolV	SATAjet 1000	SATAjet 100	SATAjet B, SATAjet GR	SATAminijet 3000	SATAminijet 4	SATA dry jet 2	Competitor spray guns	Retrofitting micrometer with pressure gauge #27771	Retrofitting atomisation air control gauge #4002
 211557 SATA adam 2 complete	X	-	-	-	-	-	-	-	-	-	-	-	-	-	-	-
 1031715 SATA adam 2 black complete	X	-	-	-	-	-	-	-	-	-	-	-	-	-	-	-
 160853 SATA adam 2 complete	-	X	X	X	X	X	X	X	X	X	-	-	-	-	-	-
 1031690 SATA adam 2 black complete	-	X	X	X	X	X	X	X	X	X	-	-	-	-	-	-
 160887 SATA adam 2 mini complete	-	-	-	-	-	-	-	-	-	-	X	X	-	-	-	-
 1031674 SATA adam 2 mini complete	-	-	-	-	-	-	-	-	-	-	X	X	-	-	-	-
 195222 SATA adam 2 U	X	X	X	X	X	X	X	X	X	X	X	X	X	X	-	-
 1031731 SATA adam 2 U black	X	X	X	X	X	X	X	X	X	X	X	X	X	X	-	-
 195925 SATA dock with G 1/8 male thread	-	-	-	-	-	-	-	-	-	-	-	-	-	-	X	X

Accessories/Spare Parts

SATA adam 2 display
fits on all "docks"
Part No. 160697



SATA adam 2 dock
SATAjet 5000 series only
SATA spray guns
Part No. 211565
Part No. 211573 (2x)



SATA adam 2 dock
for "full size"
SATA spray guns
Part No. 160788
Part No. 160796 (2x)



SATA adam 2 black display only
Part No. 1031658
For on all docks



SATA adam 2 mini dock
or SATAminijet 3, 4,
3000 B & 4400 B
SATAminijet 1000 K & H
Part No. 160861



SATA dock
with G 1/8 male thread
to upgrade analog gauge, e.g.
on pneumatically operated
systems
Part No. 195925



SATA adam 2 U dock
for SATA dry jet and
competitor spray
guns
Part No. 195230



Battery kit
for SATA adam 2
display
Part No. 160739



Adapter
G1/4 to G1/8
Part No. 677023



Your SATA dealer



DanAm

The exclusive independent distributor of
SATA product in the US and Puerto Rico

One SATA Drive
Spring Valley, MN 55975
Phone: 800-533-8016
Fax: 800-633-7282
e-mail: satajet@satausa.com
www.satausa.com

Errors and technical alterations reserved - SATA, SATAjet and/or other SATA products referenced herein are either registered trademarks or trademarks of SATA GmbH & Co. KG in the U.S. and/or other countries.

47_ SATA adam 2
Printed in the USA
20-0518